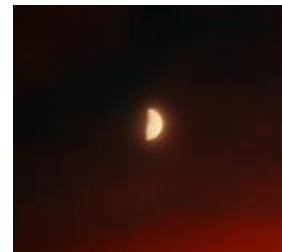


Moon Song



Mysterioso

Michael Barnathan

Flute *p*

Clarinet in B \flat *p*

Harp *p*

Piano *p*

String Ensemble *p*

Violin *p*

Violin *p* arco

Viola *p* arco

Cello *p* arco

Timpani *p*

Moon Song

2

Fl

B♭ Cl.

p

7

Harp

mp

7

Pno.

7

p

7

Vln.

7

Vln.

7

Vla.

Vc.

7

Timp.

Detailed description: This is a page of a musical score for an orchestral piece titled "Moon Song". The score is written for a full orchestra and includes parts for Flute (Fl), B♭ Clarinet (B♭ Cl.), Harp (Harp), Piano (Pno.), Violin I (Vln.), Violin II (Vln.), Viola (Vla.), Violoncello (Vc.), and Timpani (Timp.). The music is in the key of D major (one sharp) and 2/4 time. The score is divided into measures, with measure numbers 2, 7, and 12 indicated at the beginning of their respective staves. The Flute part has rests in all measures. The B♭ Clarinet part has rests in measures 1-3, followed by a melodic line in measures 4-6, and rests in measures 7-12. The Harp part has a melodic line in the right hand and a rhythmic accompaniment in the left hand. The Piano part has rests in all measures. The Violin I part has rests in measures 1-3, followed by a melodic line in measures 4-6, and rests in measures 7-12. The Violin II part has rests in all measures. The Viola part has rests in all measures. The Violoncello part has rests in all measures. The Timpani part has rests in all measures. Dynamics include *p* (piano) and *mp* (mezzo-piano). A crescendo hairpin is present in the Violin I part in measures 4-6.

Moon Song

13

Fl.

B \flat Cl.

Hp.

Pno.

Vln.

Vln.

Vla.

Vc.

Timp.

p

Detailed description: This page of a musical score for 'Moon Song' covers measures 13 through 17. The score is arranged for a full orchestra. The Flute (Fl.) and B-flat Clarinet (B \flat Cl.) parts are mostly silent, indicated by rests. The Harp (Hp.) part features a melodic line in the right hand and a bass line in the left hand, with a large slur spanning measures 13-17. The Piano (Pno.) part has a rest in the right hand and a rest in the left hand, with a piano (*p*) dynamic marking appearing in measure 17. The Violin I (Vln.), Violin II (Vln.), Viola (Vla.), Violoncello (Vc.), and Timpani (Timp.) parts are all silent, indicated by rests. The key signature is one sharp (F#) and the time signature is 4/4. The page number '3' is in the top right corner.

Moon Song

This musical score for "Moon Song" is arranged for a chamber ensemble. The score is written in G major and 4/4 time. It begins at measure 18, which is marked with a repeat sign. The instruments and their parts are as follows:

- Flute (Fl):** Remains silent throughout the piece.
- B♭ Clarinet (B♭ Cl.):** Plays a melodic line starting with a trill (tr) in measure 18. The dynamic is *mf* (mezzo-forte).
- Piano (Hp.):** Features a complex accompaniment with a forte (*f*) dynamic in measure 18. The right hand plays a series of chords and eighth notes, while the left hand provides a rhythmic accompaniment.
- Piano (Pno.):** Provides harmonic support with chords, marked with a forte (*f*) dynamic.
- Violin (Vln.):** Both the first and second violin parts are silent throughout the piece.
- Viola (Vla.):** Remains silent throughout the piece.
- Violoncello (Vc.):** Remains silent throughout the piece.
- Tympani (Timp.):** Remains silent throughout the piece.

The score includes various musical notations such as trills, slurs, and dynamic markings (*mf*, *mp*, *f*, *p*) to guide the performer's interpretation.

Moon Song

23 *8^{va}* 1. 5

Fl.

B \flat Cl.

Hp.

Pno.

Vln.

Vln.

Vla.

Vc.

Timp.

1.

1.

1.

1.

1.

1.

1.

1.

34

Fl

B♭ Cl.

Hp.

Pno.

Vln. I

Vln. II

Vla.

Vc.

Timp.

34

34

34

34

34

34

34

34

34

34

poco cresc.

The clouds part and rays of argent light illuminate all...

poco cresc.

poco cresc.

poco cresc.

Moon Song

The score is for a piece titled "Moon Song" and is arranged for a full orchestra. The key signature is one sharp (F#) and the time signature is 3/4. The score is divided into two systems, with the second system starting at measure 39. The instruments and their parts are as follows:

- Flute (Fl):** The first staff shows a melodic line starting in measure 39. Dynamics include *cresc.* and *ff*.
- B♭ Clarinet (B♭ Cl.):** The second staff is mostly silent, with rests throughout.
- Harp (Hp.):** The third and fourth staves show arpeggiated accompaniment. Dynamics include *cresc.* and *f*.
- Piano (Pno.):** The fifth and sixth staves show a harmonic accompaniment. Dynamics include *cresc.* and *f*.
- Violins (Vln.):** The seventh and eighth staves show a melodic line. Dynamics include *cresc.* and *mp*.
- Viola (Vla.):** The ninth staff shows a melodic line. Dynamics include *cresc.* and *mp*.
- Violoncello (Vc.):** The tenth staff shows a melodic line. Dynamics include *cresc.* and *mp*.
- Timpani (Timp.):** The eleventh staff shows a rhythmic pattern of eighth notes with triplets. Dynamics include *mf* and *cresc.*.

Measure numbers 39, 40, 41, and 42 are indicated at the beginning of their respective staves. The score concludes with a triplet of eighth notes in the final measure.

Moon Song

43

Fl.

Bb Cl.

Hp.

Pno.

Vln.

Vln.

Vla.

Vc.

Timp.

3 tr

3

3

3

3

Detailed description: This page of a musical score for 'Moon Song' contains measures 43 through 46. The score is arranged for a full orchestra. The Flute (Fl.) and Bb Clarinet (Bb Cl.) parts are in the upper staves, with the Flute playing a melodic line and the Clarinet providing harmonic support. The Harp (Hp.) and Piano (Pno.) are in the middle staves, with the Harp playing chords and the Piano providing a rhythmic accompaniment. The Violin I (Vln.) and Violin II (Vln.) parts are in the lower staves, with the Violin I playing a melodic line and the Violin II providing harmonic support. The Viola (Vla.) and Violoncello (Vc.) parts are in the lower staves, with the Viola playing a melodic line and the Violoncello providing harmonic support. The Timpani (Timp.) part is in the bottom staff, playing a rhythmic pattern with triplets and trills. The key signature is one sharp (F#) and the time signature is 4/4. The page number 9 is in the top right corner.

Moon Song

10

Fl.

B♭ Cl.

47

Hp.

47

Pno.

47

Vln.

mp dolce

47

Vln.

Vla.

Vc.

47

Timp.

3

3

3

3

3

3

3

Moon Song

51

Fl

B♭ Cl.

Hp.

Pno.

Vln.

Vln.

Vla.

Vc.

Timp.

3 tr

3

3

3

Detailed description: This page of a musical score, titled 'Moon Song', contains measures 51 through 54. The score is arranged for a full orchestra. The instruments and their parts are: Flute (Fl), B♭ Clarinet (B♭ Cl.), Horns (Hp.), Piano (Pno.), Violins (Vln.), Viola (Vla.), Violoncello (Vc.), and Timpani (Timp.). The key signature is one sharp (F#) and the time signature is 4/4. Measure 51 is marked with a '51' above the first staff. The Flute and B♭ Clarinet parts have melodic lines with some grace notes. The Horns and Piano parts provide harmonic support with chords and moving lines. The Violins play a melodic line with a long slur. The Viola and Violoncello parts have a more rhythmic, chordal texture. The Timpani part features a triplet pattern with a trill (tr) in the first measure. The page number '11' is in the top right corner.

Moon Song

This musical score for "Moon Song" is written for a full orchestra. It features the following instruments and parts:

- Flute (Fl.):** Part 1, starting at measure 12. The notation shows a series of eighth notes with rests, marked *ff*.
- B♭ Clarinet (B♭ Cl.):** Part 1, starting at measure 12. Similar notation to the flute, marked *ff*.
- Harp (Hp.):** Part 1, starting at measure 55. The notation shows a series of chords, marked *ff*.
- Piano (Pno.):** Part 1, starting at measure 55. The right hand has a melodic line with a triplet of eighth notes, and the left hand has a rhythmic accompaniment of chords. Marked *ff*.
- Violin (Vln.):** Part 1, starting at measure 55. The notation shows a melodic line with a triplet of eighth notes, marked *ff*.
- Violin (Vln.):** Part 2, starting at measure 55. The notation shows a melodic line with a triplet of eighth notes, marked *ff*.
- Viola (Vla.):** Part 1, starting at measure 55. The notation shows a melodic line with a triplet of eighth notes, marked *ff*.
- Violoncello (Vc.):** Part 1, starting at measure 55. The notation shows a melodic line with a triplet of eighth notes, marked *ff*.
- Tympani (Timp.):** Part 1, starting at measure 55. The notation shows a melodic line with a triplet of eighth notes, marked *ff*.

The score is in 2/4 time and the key signature has one sharp (F#). The dynamic marking *ff* (fortissimo) is used throughout. Measure numbers 12 and 55 are indicated at the beginning of their respective staves.